

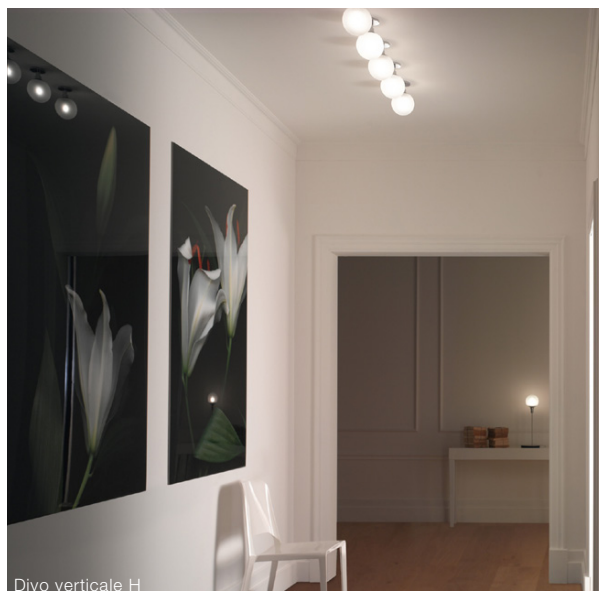
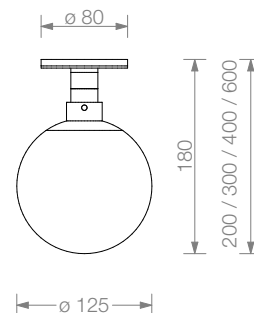
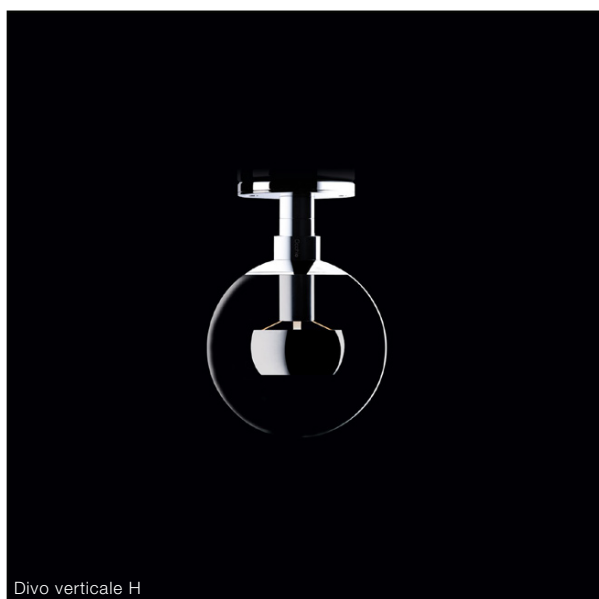
Divo verticale mains voltage halogen

Ceiling luminaire - modular system consisting of body and head

Thanks to its unique modularity the Occhio head-body system delivers impressive lighting solutions for your room. For different lighting effects diverse, turnable reflector heads are available, which can be easily substituted at any time thanks to a simple plug-in mechanism. The diverse wall and ceiling boxes allow for all recessed and surface mounting options.

Ceiling luminaire Occhio Divo verticale consisting of

- body Occhio verticale - different length and surfaces
- head Occhio Divo - different lighting effects and surfaces
- Occhio accessories - different mounting options and surfaces



material
aluminium, brass, steel, glass

surface
head: chrome, matt chrome
body: chrome, matt chrome

length
20 cm, 30 cm, 40 cm, 60 cm
length incl. reflector head

recommended lighting effect
A, FW, G, H see p.2 cutsheet

light source
mains voltage halogen, operating voltage 230 V
60 W, B15d Eco, energy efficiency grade D, lifetime 2.000 h

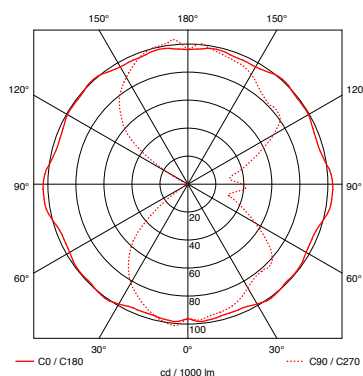
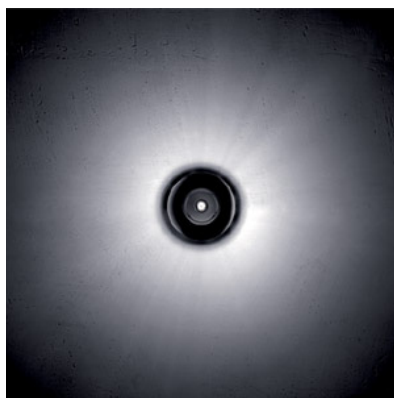
luminous flux (bulb)
60 W / 980 lm, 70 W / 1180 lm

color temperature / color rendering
2900K / CRI 100

weight
body and reflector head max. 0,9 kg

mounting accessories
for surface or recessed mounting, see p.3 cutsheet

Divo verticale recommended lighting effect



Divo A

Reflector head for spherical light,
radial distribution

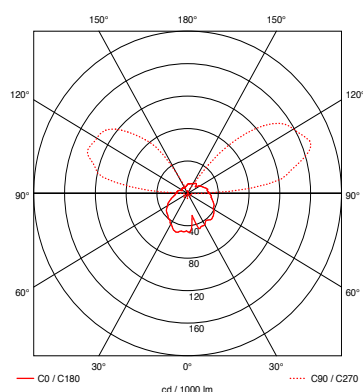
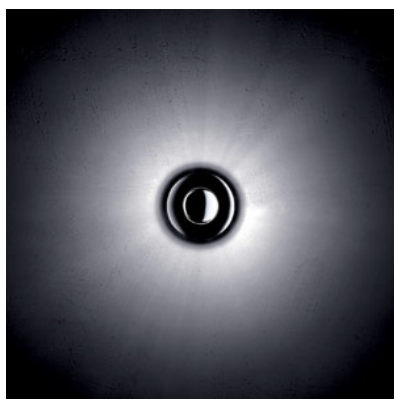
with satinised glass, the light output varies
compared to the illustrations shown

efficiency of reflector head

clear glass 96%
satinised glass 93%

material / surface

clear or satinised, heat-resistant glass
reflector aluminium
fixture matt chrome or chrome



Divo Fw

reflector head for light with
wide radiation up

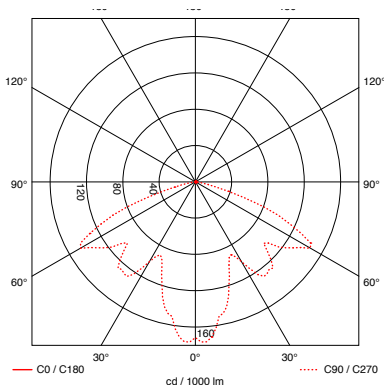
with satinised glass, the light output varies
compared to the illustrations shown

efficiency of reflector head

clear glass 63%
satinised glass 61%

material / surface

clear or satinised, heat-resistant glass
reflector aluminium
fixture matt chrome or chrome



Divo G

reflector head for light with
narrow radiation down

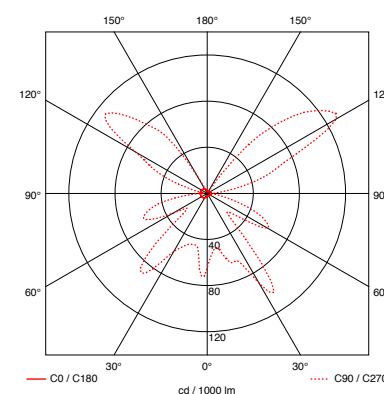
with satinised glass, the light output varies
compared to the illustrations shown

efficiency of reflector head

clear glass 54%
satinised glass 52%

material / surface

clear or satinised, heat-resistant glass
reflector aluminium
fixture matt chrome or chrome



Divo H

reflector head for light
with narrow radiation down and
wide radiation up

with satinised glass, the light output varies
compared to the illustrations shown

efficiency of reflector head

clear glass 57%
satinised glass 54%

material / surface

clear or satinised, heat-resistant glass
reflector aluminium
fixture matt chrome or chrome

cutsheet


Occhio

3 | 3




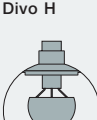
Divo verticale

Item number

Item number
_matt chrome M
_chrome C

verticale			
	20 cm		30 / 40 / 60 cm
			max. 70 W mains voltage halogen B15 d
			lengths with reflector heads
	20 cm		8V 11 00 _
	30 cm		8V 12 00 _
	40 cm		8V 13 00 _
	60 cm		8V 14 00 _



Divo A			
		clear glass	8K 00 A1 M 8K 00 A1 C
		satinised glass	8K 00 A2 M 8K 00 A2 C
Divo Fw			
		clear glass	8K 00 F1 M 8K 00 F1 C
		satinised glass	8K 00 F2 M 8K 00 F2 C
Divo G			
		clear glass	8K 00 G1 M 8K 00 G1 C
		satinised glass	8K 00 G2 M 8K 00 G2 C
Divo H			
		clear glass	8K 00 H1 M 8K 00 H1 C
		satinised glass	8K 00 H2 M 8K 00 H2 C



flat box			
		for plastering or wall / ceiling box h 8 mm, ø 80 mm	8Z 00 00 _
spacing box			
		surface mounting h 22 mm, ø 80 mm	8Z 01 00 _
		with hole for external cable supply h 22 mm, ø 80 mm	8Z 03 00 _