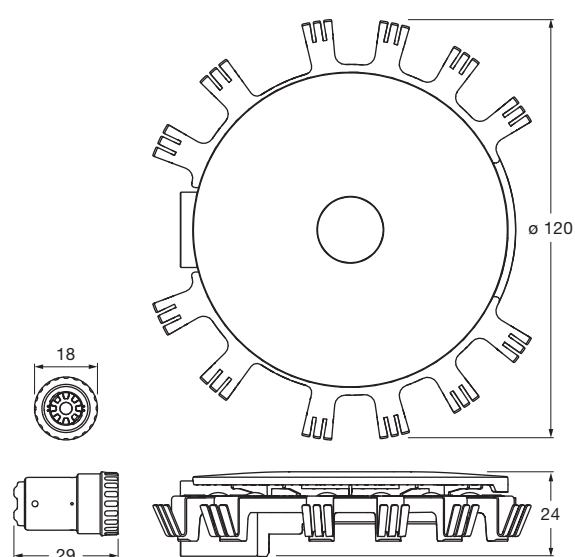
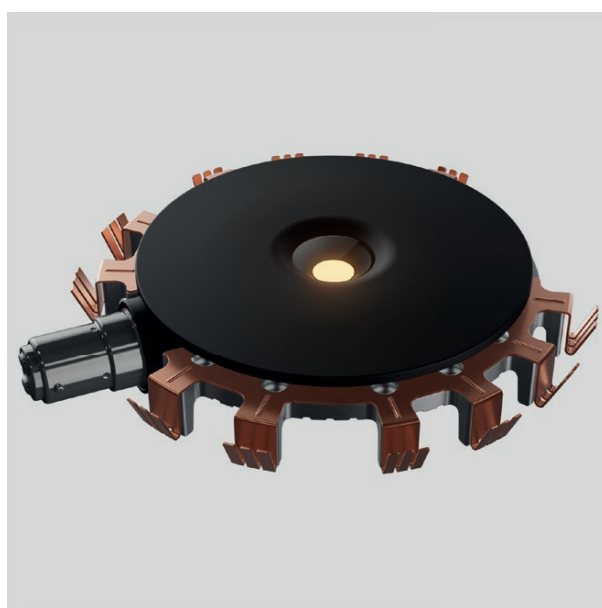


## clipLED module Sento B,C datasheet

LED replacement module for halogen light source in Sento HV halogen luminaires with single-sided light output. clipLED module can be installed in an existing Sento HV head without tools.

B15d adapter for mounting on Sento HV body included. Connection to 230 V/50 Hz mains voltage and externally dimmable via phase cut dimmer.



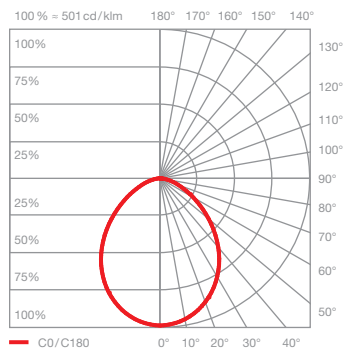
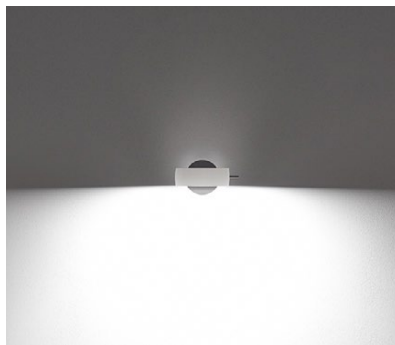
dimensions in mm

### technical data clipLED module Sento B,C

properties	material	aluminum, copper beryllium, polyamide, glass, steel
	weight	160 g
clipLED	average life time	25.000 hrs
	energy efficiency class (luminous efficiency)	F (head single-sided 101 lm / W)
	power	LED 10 W
	color rendering index	CRI 95
	color temperature (color consistency)	2700 K (3-step)
electricity	dimming	via trailing-edge phase cut dimmer or via leading-edge phase cut dimmer
	connection	220 – 240 V AC / 50 Hz
	power factor power supply (cos $\phi$ 1)	> 0.9
	flicker / stroboscopic effect	< 0.2 (PstLM) / < 0.3 (SVM)
	permitted operating conditions	max. 30°C for indoor use only

## clipLED module Sento B,C lighting effects

 head single sided

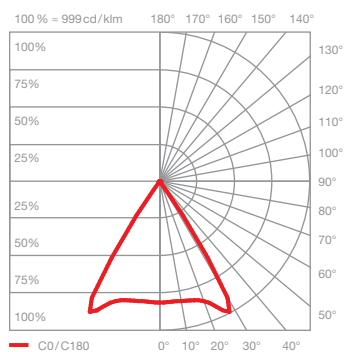


### Sento B

diffuse light

insert: satinised glass

luminous flux:  
clipLED 10 W 385 lm\*  
B15d 70 W 535 lm\*\*



### Sento C

directed light  
beam angle approx. 80°

insert: lens

luminous flux:  
clipLED 10 W 750 lm\*  
B15d 70 W 810 lm\*\*

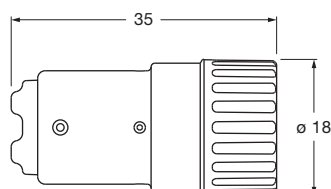
\*built into luminaire head with inserts  
\*\*five bulbs 70 W HV halogen clear measured and value averaged

## clipLED module Sento B,C accessories

### long B15D adapter

for luminaires from Occhio with short socket

Article can be reordered free of charge in the partner portal.



For shorter socket (< 28 mm) a long adapter is required.

