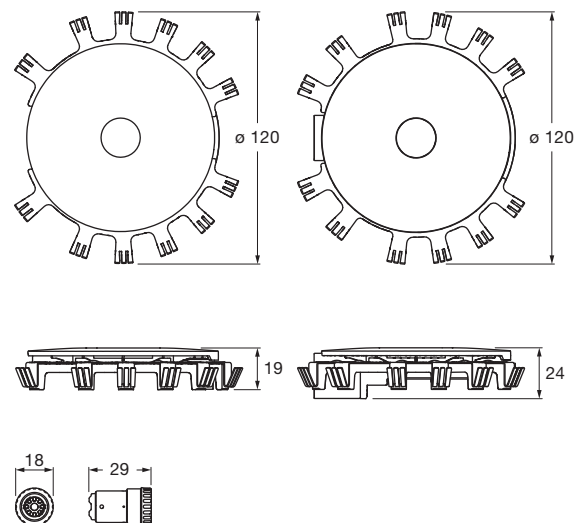
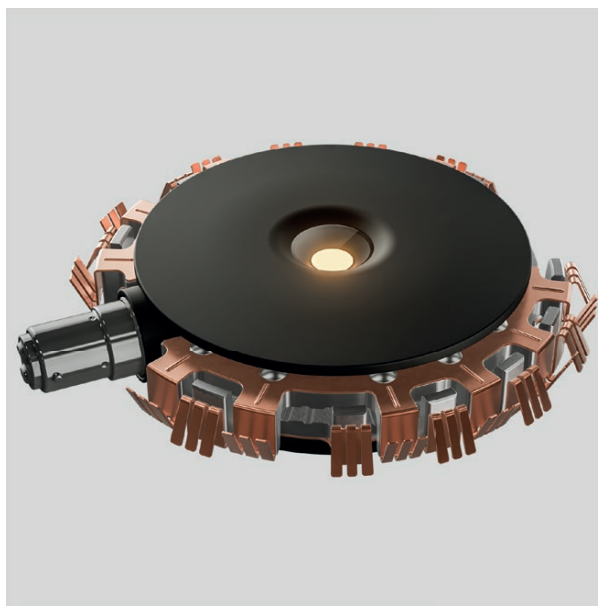


clipLED module Sento A,D,E datasheet

LED replacement module for halogen light source in Sento HV halogen luminaires with double-sided light output. clipLED module can be installed in an existing Sento HV head without tools.

B15d adapter for mounting on Sento HV body included. Connection to 230 V/50 Hz mains voltage and externally dimmable via phase cut dimmer.



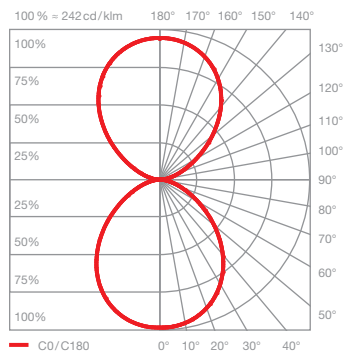
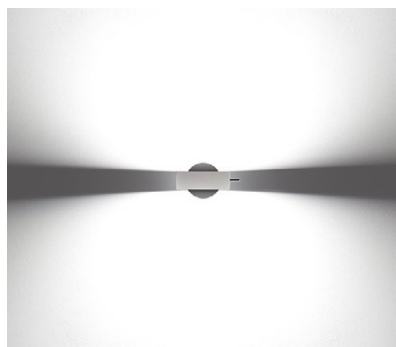
dimensions in mm

technical data clipLED module Sento A,D,E

properties	material	aluminum, copper beryllium, polyamide, glass, steel
	weight	160 g
clipLED	average life time	25.000 hrs
	energy efficiency class (luminous efficiency)	F (head single-sided 101 lm / W)
	power	LED 20 W
	color rendering index	CRI 95
	color temperature (color consistency)	2700 K (3-step)
electricity	dimming	via trailing-edge phase cut dimmer or via leading-edge phase cut dimmer
	connection	220 – 240 V AC / 50 Hz
	power factor power supply (cos ϕ 1)	> 0.9
	flicker / stroboscopic effect	< 0.2 (PstLM) / < 0.3 (SVM)
	permitted operating conditions	max. 30°C for indoor use only

clipLED module Sento A,D,E lighting effects

 head double sided

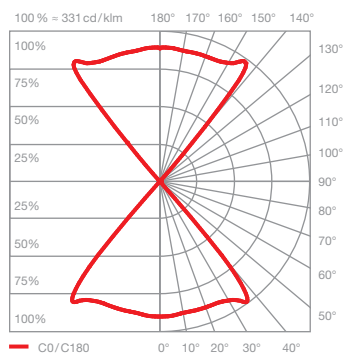


Sento A

diffuse light in both directions

insert: satinised glass
satinised glass

luminous flux:
clipLED 20 W 790 lm*
B15d 70 W 890 lm**

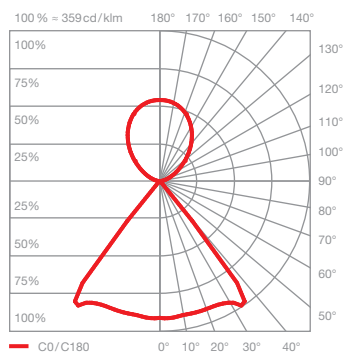
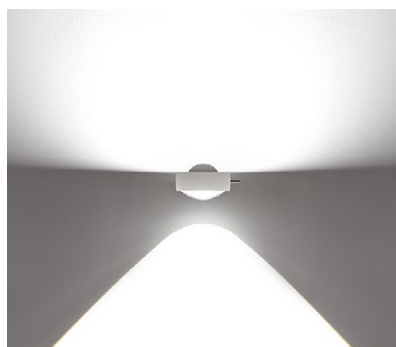


Sento D

directed light in both directions
beam angle approx. 80°

insert: lens
lens

luminous flux:
clipLED 20 W 1420 lm*
B15d 70 W 1290 lm**



Sento E

diffuse up light
directed down light
beam angle approx. 80°

insert: satinised glass
lens

luminous flux:
clipLED 20 W 1060 lm*
B15d 70 W 1150 lm**

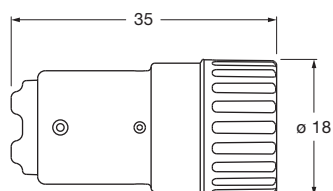
* built into luminaire head with inserts
** five bulbs 70 W HV halogen clear measured and value averaged

clipLED module Sento A,D,E accessories

long B15D adapter

for luminaires from Occhio with short socket

Article can be reordered free of charge in the partner portal.



For shorter socket (< 28 mm) a long adapter is required.

