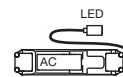
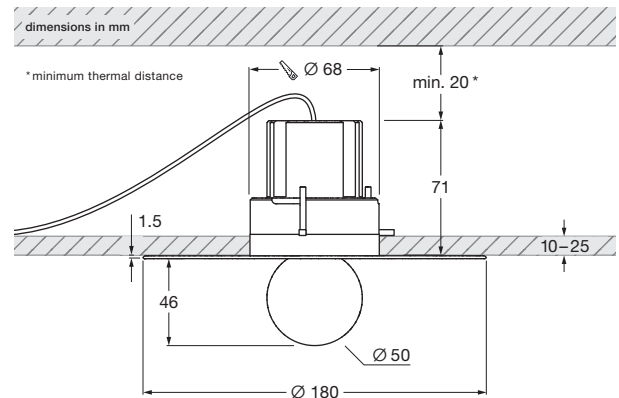
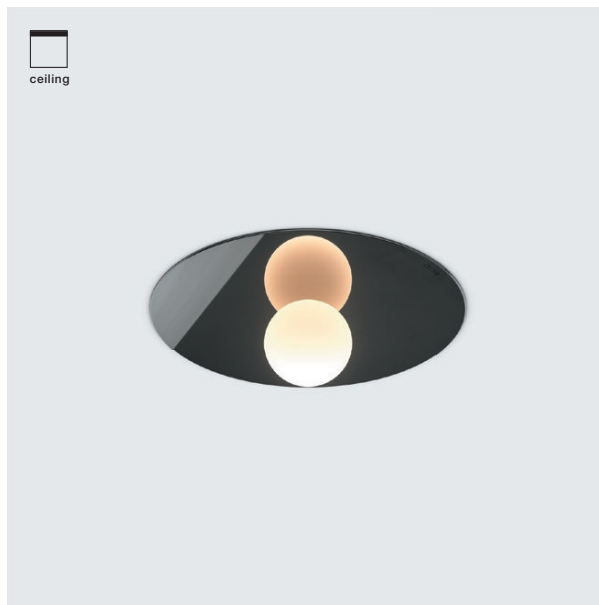


Coro moon vivo flat pro datasheet

LED ceiling downlight with fireball light source (non-tiltable) and mirror disc. flat version for mounting on hollow ceilings. Version with remote power supply unit, connection to external constant current power source (driver). Dimmable via customer-supplied dimmable power supply unit.

The innovative LED fireball technology creates a special lighting effect - direct light in forward direction and atmospheric illumination by the fireballs indirect light. The fireball as a light source has a light cone of 30°.

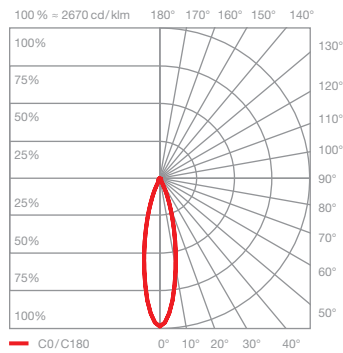


opt. third party »color tune« driver (2-channel driver with custom settings for Occhio fixtures)
L 174 x W 41 x H 29, cable length 50

technical data Coro moon vivo flat pro

properties	material	aluminium, glass, PVD coated, painted, plastic
	weight	1 kg
surface	mirror disc	soft bronze, dark chrome polished, phantom
Occhio LED	average life time	> 50.000 hrs
	energy efficiency class	This product contains a light source of energy efficiency class F (2200–3500 K, 2700 K, 3000 K) or E (2700–4000 K, 4000 K)
	power	LED 9 W
	color rendering index	CRI Ra 92
electricity	color temperature (color consistency)	single color: 2700 K, 3000 K, 4000 K (2-step) color tune: 2200–3500 K (2-step) 2700–4000 K (2-step)
	dimming	with suitable power supply unit
	connection	single color (1-channel): max. 500 mA / 18 VDC color tune (2-channel): max. 1000 mA total current (I ₁ + I ₂) / 9 VDC per channel
	permitted operating conditions	ambient temperature 10–30°C, for indoor use only

Coro moon vivo flat pro lighting effects



moon

direct, glare-free light,
beam angle approx. 30°

optics: Occhio fireball

power: high color 9W

luminous flux: 2700 K 670lm
3000 K 720lm
4000 K 820lm