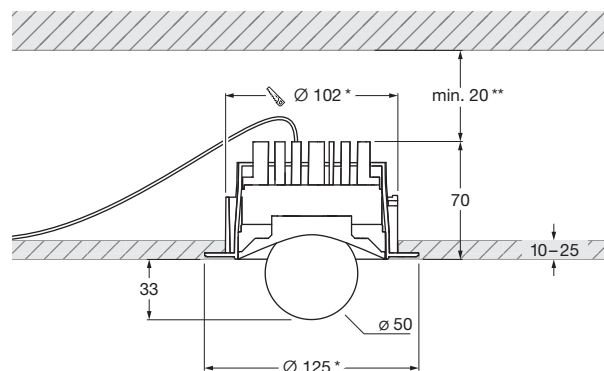
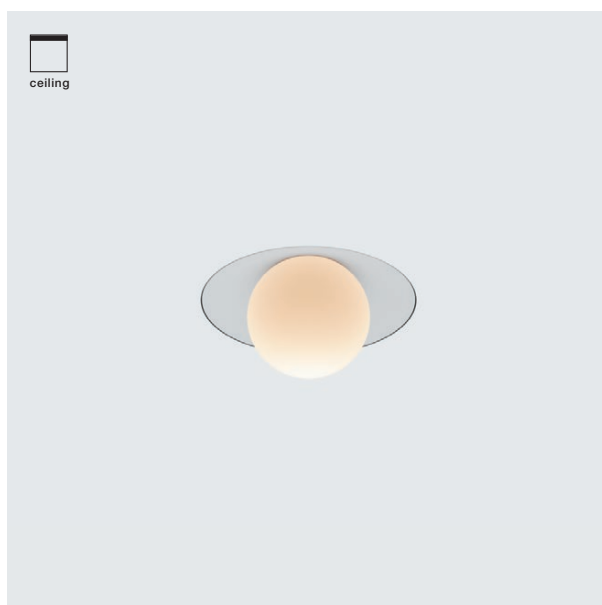


Coro moon piano v pure »air« datasheet

LED recessed downlight with fireball light source (non-tiltable). piano v downlight version for mounting on hollow ceilings. pure model for frameless installation. The downlight is mounted with a separate plaster ring. Version with remote power supply unit, connection to 230 VAC mains voltage. Switching, dimming and »color tune« via Occhio air. The color temperature can be adjusted continuously between 2700–4000 K (optional 2200–3500 K).

The innovative LED fireball technology creates a special lighting effect - direct light in forward direction and atmospheric illumination by the fireballs indirect light. The fireball as a light source has a light cone of 30°.



* cut-out and surrounding fold required for mounting; matching step grinder optionally available

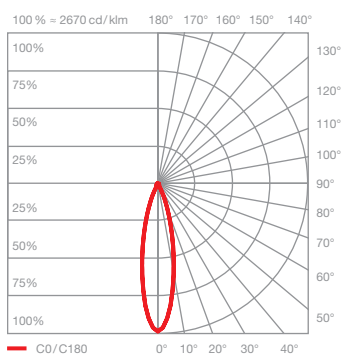
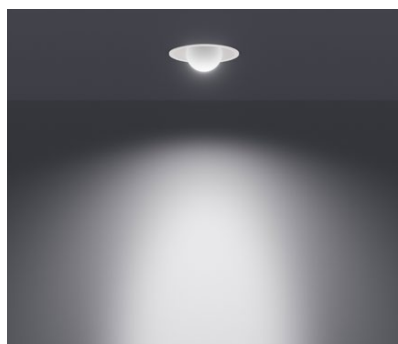
** minimum thermal distance, installation height depending on driver

dimensions in mm

technical data Coro moon piano v pure »air«

properties	material	aluminium, glass, painted, plastic
	weight	0.9 kg
surface	tube	matt white, matt black
Occhio »color tune« LED	average life time	> 50.000 hrs
	energy efficiency class	This product contains a light source of energy efficiency class F (2200–3500K) or E (2700–4000K)
	power	LED 9 W (incl. Occhio power supply unit approx. 12 W, standby < 0.5 W)
	color rendering index	CRI Ra 92
	color temperature (color consistency)	color tune: 2200–3500 K (2-step) 2700–4000 K (2-step)
electricity	dimming	via Occhio air
	connection	230 VAC
	permitted operating conditions	ambient temperature 10–30°C, for indoor use only

Coro moon piano v pure »air« lighting effects



moon

direct, glare-free light,
beam angle approx. 30°

optics: Occhio fireball

power: high color 9 W

luminous flux: 2200–3500 K 510–660 lm
2700–4000 K 580–710 lm