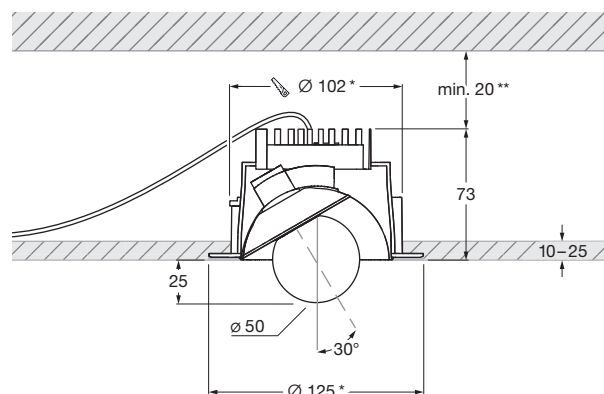
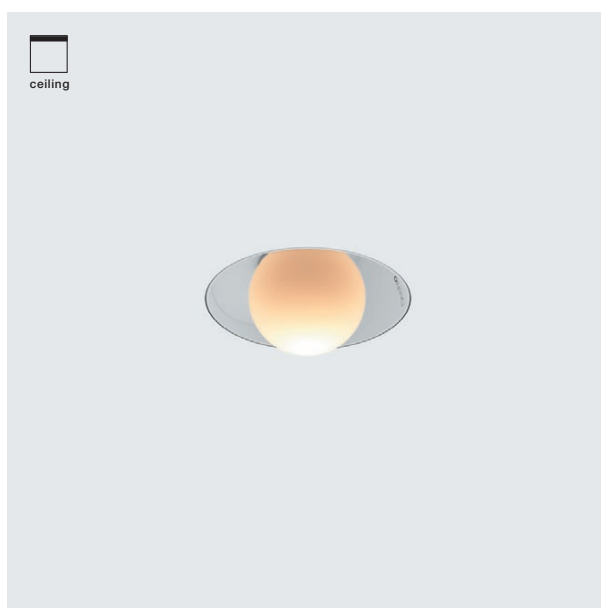


## Coro moon piano pro pure datasheet

LED recessed spotlight with fireball light source (swivable) for hollow ceilings or solid ceilings with ceiling box. pure model for frameless installation. The spotlight is mounted with a separate plastering ring. Version with remote power supply unit, connection to external constant current power source (driver). Dimmable via customer-supplied dimmable power supply unit. The innovative LED fireball technology creates a special lighting effect - direct light in forward direction and atmospheric illumination by the fireballs indirect light. The fireball as a light source can be rotated by 360° (with stop), swiveled by 30° and has a light cone of 30°.



\* Cutout and surrounding fold required for mounting; matching step grinder optionally available

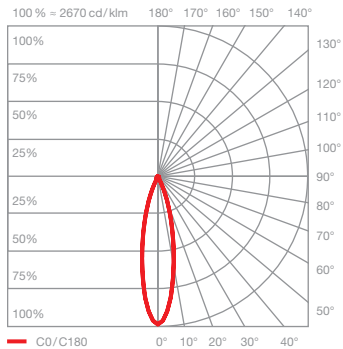
\*\* minimum thermal distance, installation height depending on driver

dimensions in mm

### technical data Coro moon piano pro pure

properties	material	aluminium, glass, painted, plastic
	turning range	360° (with stop)
	mobility head	30°
	weight	0.6 kg
surface	tube	matt white, matt black
Occhio LED	average life time	> 50.000 hrs
	energy efficiency class (luminous efficiency)	F (99 lm/W, @4000 K single color)
	power	LED 9 W
	color rendering index	CRI Ra 92
	color temperature (color consistency)	single color: 2700 K, 3000 K, 4000 K (2-step) color tune: 2200–3500 K (2-step) 2700–4000 K (2-step)
electricity	dimming	with suitable power supply unit
	connection	single color (1-channel): max. 500 mA / 18 V DC color tune (2-channel): max. 1000 mA total current ( $I_1 + I_2$ ) / 9 V DC per channel
	permitted operating conditions	ambient temperature 10–30°C, for indoor use only

Coro moon piano pro pure  
lighting effects



**moon**

direct, glare-free light,  
beam angle approx. 30°

optics: Occhio fireball

power: high color 9 W

luminous flux:

2700 K	670 lm
3000 K	720 lm
4000 K	820 lm
2200–3500 K	510–660 lm
2700–4000 K	580–710 lm