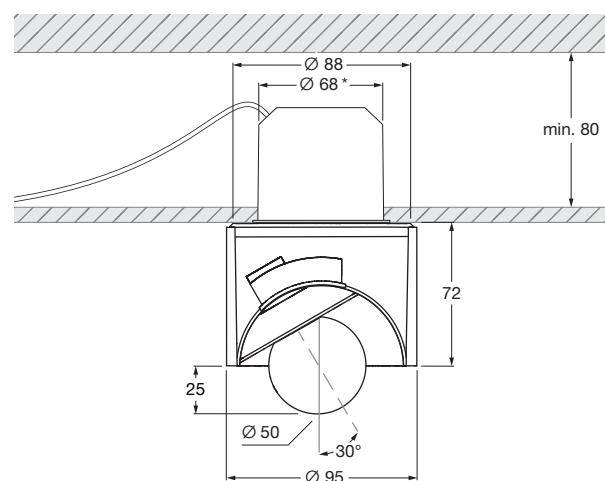


## Coro moon alto flat »air« datasheet

LED ceiling spotlight with cylindrical base and fireball light source (swivable). flat version for mounting on hollow ceilings. Version with remote power supply unit, connection to 230 VAC mains voltage. Switching, dimming and »color tune« via Occhio air. The color temperature can be adjusted continuously between 2700–4000 K (optional 2200–3500 K).

The innovative LED fireball technology creates a special lighting effect - direct light in forward direction and atmospheric illumination by the fireballs indirect light. The fireball as a light source can be rotated by 360° (with end-stop), swiveled by 30° and has a light cone of 30°



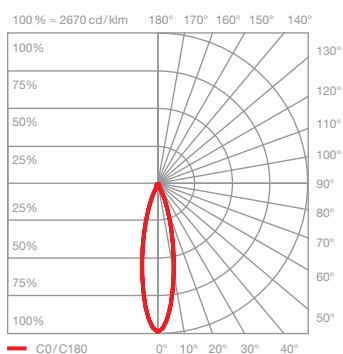
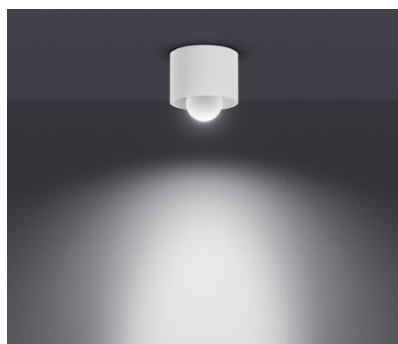
\* cut-out dimensions

dimensions in mm

### technical data Coro moon alto flat »air«

properties	material	aluminium, glass, PVD coated, painted, plastic
	turning range	360° (with stop)
	mobility head	30°
	weight	1 kg
surface	head	gold, matt gold, rose gold polished, matt silver, matt white, matt black, phantom polished, black phantom polished, dark chrome polished
	tube	matt white, matt black
Occhio »color tune« LED	average life time	> 50.000 hrs
	energy efficiency class	This product contains a light source of energy efficiency class F (2200–3500K) or E (2700–4000K)
	power	LED 9W (incl. Occhio power supply unit approx. 12 W, standby < 0.5 W)
	color rendering index	CRI Ra 92
	color temperature (color consistency)	color tune: 2200–3500 K (2-step)      2700–4000 K (2-step)
electricity	dimming	via Occhio air
	connection	230 VAC
	permitted operating conditions	ambient temperature 10–30°C, for indoor use only

## Coro moon alto flat »air« lighting effects



### moon

direct, glare-free light,  
beam angle approx. 30°

optics: Occhio fireball

power: high color 9 W

luminous flux: 2200–3500 K 510–660 lm  
2700–4000 K 580–710 lm